



**CONCERN  
SOUZENERGO**



General-purpose and oil and gas  
pipeline armature

# General-purpose pipeline armature

## Rising-stem cast gate valve



DN 50-1200  
PN 16-100 bar  
Operating medium:  
- water, steam  
- gas  
- oil, petrochemicals  
Connection to pipeline:  
- flanged  
- by welding  
Tightness class:  
- A, B, C according to EN 12266-1  
Body material: C, S, I  
Drive type:  
- wheel  
- reducer  
- actuator



## Rising-stem welded gate valve



DN 150-2400  
PN 1-10 bar  
Operating medium:  
- water, steam,  
- gas  
- oil, petrochemicals  
Connection to pipeline:  
- flanged  
- by welding  
Tightness class:  
- A, B, C according to EN 12266-1  
Body material: C, A, S  
Drive type:  
- wheel  
- reducer  
- actuator



## Rising-stem stamp-welded gate valve



DN 150-1000  
PN 16-25 bar  
Operating medium:  
- water, steam  
- gas  
- oil, petrochemicals  
Connection to pipeline:  
- flanged  
- by welding  
Tightness class:  
- A, B, C according to EN 12266-1  
Material: C, A, S  
Drive type:  
- wheel  
- reducer  
- actuator



## Goggle gate valve



DN 400-3200  
PN 1-4 bar  
Operating medium:  
- blast furnace gas  
- coke gas  
- mixed gas  
Connection to pipeline:  
- flanged  
Tightness class:  
- A according to EN 12266-1  
Material: C, A  
Drive type:  
- manual  
- reducer  
- actuator



## Non-rising stem stamp-welded cast gate valve



DN 400-1600  
PN 2,5-25 bar  
Operating medium:  
- water, steam,  
- gas  
- oil, petrochemicals  
Connection to pipeline:  
- flanged  
- by welding  
Tightness class:  
- A, B, C according to EN 12266-1  
Material: C, A, S  
Drive type:  
- reducer  
- actuator



## Non-rising stem welded gate valve



DN 500-1600  
PN 2,5-10 bar  
Operating medium:  
- water, steam  
- gas  
- oil, petrochemicals  
Connection to pipeline:  
- flanged  
- by welding  
Tightness class:  
- A, B, C according to EN 12266-1  
Material: C, A, S  
Drive type:  
- reducer  
- actuator



# General-purpose pipeline armature

## Inter-flanged butterfly valve



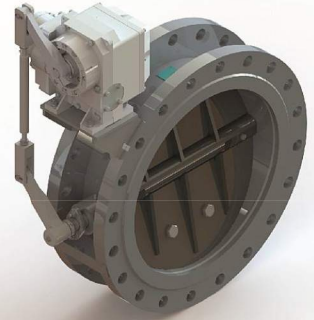
DN 32-1000  
PN 6-16 bar  
Operating medium:  
- water, air, oils, natural gas, etc.  
Connection to pipeline:  
- flanged  
Tightness class:  
- A according to EN 12266-1  
Body material: I  
Drive type:  
- handwheel  
- reducer  
- actuator



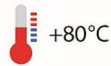
## Gas valves



DN 50-3200  
PN 0,001-16 bar  
Operating medium:  
- blast-furnace gas  
- coke gas,  
- air  
Connection to pipeline:  
- flanged;  
Body material: C, A, S  
Drive type:  
- manual  
- actuator



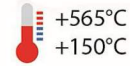
## Vent valves



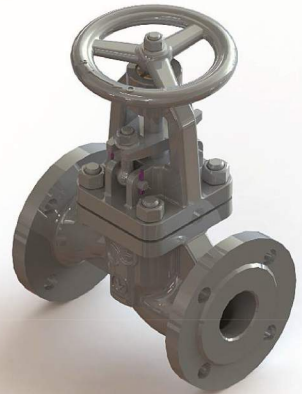
DN 200-1600  
PN 0,05 bar  
Operating medium:  
- vent system air  
Connection to pipeline:  
- flanged  
Tightness class:  
- A according to EN 12266-1  
Material: C, A, S  
Drive type:  
- actuator



## Steel shutoff valve



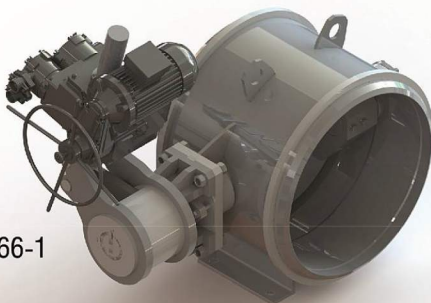
DN 10-250  
PN 16-63 bar  
Operating medium:  
- water, air, steam, ammonia,  
natural gas, oil, etc.  
Connection to pipeline:  
- flanged  
Tightness class:  
- A, B, C according to EN 12266-1  
Material: C, S  
Drive type:  
- wheel  
- actuator



## Elastic packing butterfly valve



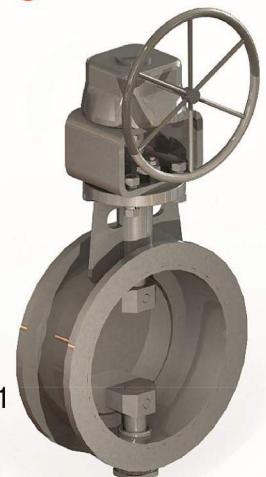
DN 200-2200  
PN 10-25 bar  
Operating medium:  
- water, thin pulp  
- gas, air  
Connection to pipeline:  
- flanged  
- by welding  
Tightness class:  
- A according to EN 12266-1  
Material: C, A  
Drive type:  
- manual  
- actuator



## Metal to metal butterfly valve



DN 200-2000  
PN 1-16 bar  
Operating medium:  
- water, steam  
- gas, air  
Connection to pipeline:  
- flanged  
- by welding  
Tightness class:  
- A, B, C according to EN 12266-1  
Material: C, A  
Drive type:  
- manual  
- actuator





# General-purpose pipeline armature

## Dashpot swing check valve



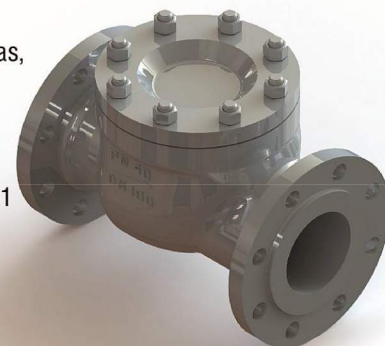
DN 600-2000  
PN 2,5-80 bar  
Operating medium:  
- water, pulp, steam, oil, etc.  
Connection to pipeline:  
- flanged  
- by welding  
Tightness class:  
- according to GOST 13252-91  
Material: C, A  
Drive type:  
- automatic (be operating medium flow)



## Cast swing check valve



DN 32-800  
PN 16-160 bar  
Operating medium:  
- hydrocarbons, oil, natural gas, water, steam, etc.  
Connection to pipeline:  
- flanged  
Tightness class:  
- according to GOST 13252-91  
Material: C, A, S  
Drive type:  
- automatic (be operating medium flow)



## Lift check valve



DN 20-100  
PN 63-160 bar  
Operating medium:  
- water, steam, oil, natural gas, etc.  
Connection to pipeline:  
- by welding  
Tightness class:  
- according to GOST 13252-91,  
- A class according to EN 12266-1 is possible  
Material: C, A, S  
Drive type:  
- automatic (be operating medium flow)



## Welded swing check valve



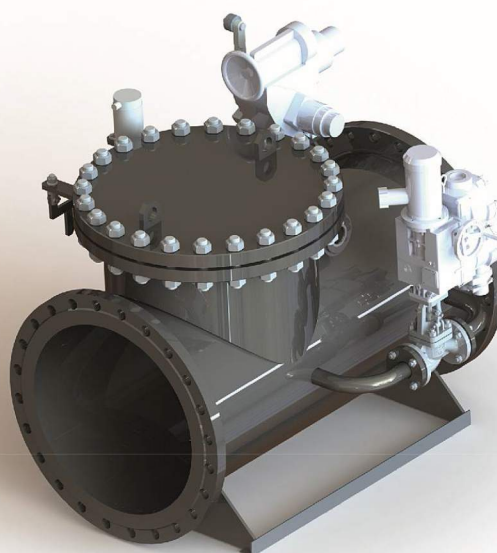
DN 50-2000  
PN 16-63 bar  
Operating medium:  
- water, steam, oil, ammonia, natural gas, etc.  
Connection to pipeline:  
- flanged  
- by welding  
Tightness class:  
- according to GOST 13252-91  
Material: C, A, S  
Drive type:  
- automatic (by operating medium flow)



## Quick closing isolating valve



DN 50-1500  
PN 1-25 bar  
Operating medium:  
- natural, coke, blast-furnace, ferroalloy plant  
- air  
- water, steam, petrochemicals  
Connection to pipeline:  
- flanged, be welding  
Tightness class:  
- A according to EN 12266-1  
Material: C, A  
Drive type (open):  
- M30 actuator  
- manual  
Drive type (closed):  
- YMM electromagnet



# General-purpose pipeline armature

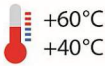
## Three-way ball valve



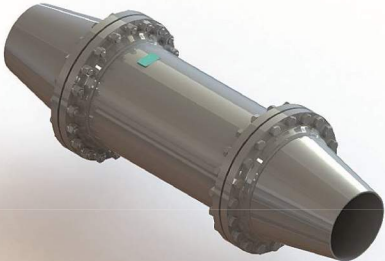
- DN 32-50
- PN 16 bar
- Operating medium:
  - water, steam, fuel gas, etc.
- Connection to pipeline:
  - flanged
  - union joint
- Tightness class:
  - A according to EN 12266-1
- Material: C, S, B
- Action type:
  - T-type, L-type
- Drive type:
  - manual



## Gas filters



- DN 100-1500
- PN 10-63 bar
- Operating medium:
  - oxygen
  - nitrogen
- Connection to pipeline:
  - flanged
  - be welding
- Material: C, A, S



# Nonstandard pipeline fittings upon customer's request



Body material steel type (and identification mark)

Carbon steel	Alloy steel	Stainless steel	Iron	Bronze
--------------	-------------	-----------------	------	--------



# Oil and gas pipeline fittings

## Oil-filled gate valve



DN 50-150  
PN 140-1050 bar  
Operating medium:  
- oil and gas well products  
Temperature level: L-U;  
Quality level: PSL-1÷PSL-3;  
Operational data: - PR1, PR2  
Connection to pipeline: - flanged;  
Tightness class:  
- A according to EN 12266-1  
Material class: under API 6A  
Arrangement: XJ1, K1, K2, K3 under ГОСТ 13846  
Drive type:  
- manual (wheel)  
- actuator  
- hydrodrive



## Stamp-welded wedge gate valve for main oil pipeline



DN 50-1000  
PN 16-80 bar  
Operating medium:  
- petroleum and its products  
Connection to pipeline:  
- welded, flanged  
Tightness class:  
- A according to EN 12266-1  
Material type: C, A, S  
Drive type:  
- manual (wheel)  
- reducer  
- actuator



## Gate valves for reservoir pressure maintenance system



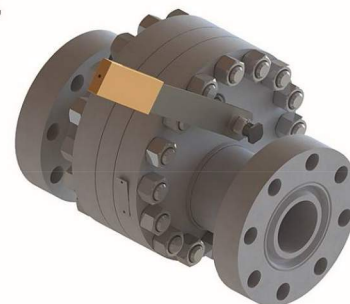
DN 50-300  
PN 100-250 bar  
Operation medium:  
- water, natural gas, petroleum and its products  
Connection to pipeline:  
- welded  
- flanged  
Tightness class: - A according to EN 12266-1  
Material type: A  
Drive type:  
- reducer  
- actuator  
- manual (wheel)  
- worm drive



## Disk valve



DN 50-80  
PN 140-350 bar  
Operation medium:  
- petroleum and its products,  
natural gas, gas-condensate  
Connection to pipeline:  
- flanged  
Tightness class:  
- A according to EN 12266-1  
Material type: A, S  
Drive type:  
- manual



## Bayonet valve



DN 800, 1200, 1400  
Pp 55 bar  
Operation medium: natural gas,  
Fire-explosive medium  
Connection to pipeline:  
- welded  
Tightness class:  
- A according to EN 12266-1  
Material type: C, A  
Drive type:  
- manual



## Also, oil and gas equipment, designed for:

wellhead sealing, tuber hanger, monitoring and regulating the mode of wells operation, shutdown and directing the extracted products to the manifold, and conducting the necessary technological operations.

- wellhead equipment
- electric pumping wellhead assembly
- sucker-rod pumping wellhead assembly
- pressure valves