



**CONCERN
SOUZENERGO**



Pipeline fittings for thermal
and nuclear power plants

Pipeline fittings for Thermal Power Plants

Wedge gate valve

DN 50-450
Pp 40-380 bar
PN 63-100 bar
Operating medium:
- water, steam, water-steam
Connection to pipeline:
- welded
Tightness class:
- A, B, C according to EN 12266-1
Material type: A, H, C
Drive type:
- wheel
- actuator
- cylindrical reducer
- conical reducer

+560°C
+250°C



Shut-off valve

DN 10-80
PN 63-380 bar
Operating medium:
- water, steam
Connection to pipeline:
- welded
Tightness class:
A, B, C according to EN 12266-1
Material type: C, H
Drive type:
- actuator
- cylindrical reducer
- conical reducer
- wheel

+560°C
+280°C



Needle and swing control valve

DN 10-400
PN 40-380 bar
Operating medium:
- water, steam
Connection to pipeline:
- welded
Tightness class:
- A according to EN 12266-1 (needle);
- 1% from Kv (swing)
Material type: C, A, H
Drive type:
- built-in actuator
- remote-acting actuator

+545°C
+250°C



Unbalanced sleeve control valve

DN 20-800
PN 40-380 bar
Operating medium:
- water, steam
Connection to pipeline:
- welded, flanged
Tightness class:
- 0,1% from Kv;
Material type: A, H
Drive type:
- built-in actuator
- remote-acting actuator

+450°C
+250°C



Slide valve

DN 32-400
PN 40-380 bar
Operating medium:
- water, steam
Connection to pipeline:
- welded
Tightness class:
Not applicable
Material type: A, H
Drive type:
- actuator

+560°C
+250°C



Throttle valve with cooling system

DN 150/250*
Pp 6/16 bar*
Operating medium:
- water, steam
Connection to pipeline:
- welded
Tightness class:
- 0,1% from Kv;
Material type: C, A, H
Drive type:
- built-in actuator
- remote-acting actuator

+325°C
+275°C



* Valves with any parameters can be manufactured upon customer's request

Pipeline fittings for Thermal Power Plants

Swing check gate valve

+540°C
+215°C

DN 20-400
PN 100-380 bar
Operating medium:
- water, steam
Connection to pipeline:
- welded
Tightness class:
- D according to EN 12266-1
Material type: C, A, H
Drive type:
- controlled by medium flow



Safety valve

+560°C
+250°C

DN 50-600
PN 16-250 bar
Operating medium:
- water, steam
Connection to pipeline:
- welded
- flanged
Tightness class:
A, B, C according to EN 12266-1
Material type: A, H
Drive type:
- from pulse valve
- spring, lever



Pulse valve

+560°C
+285°C

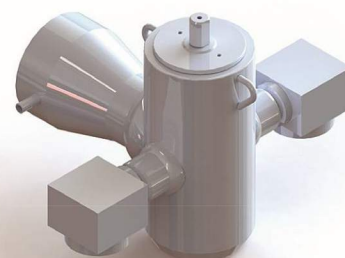
DN 20-25
PN 12-250 bar
Operating medium:
- steam
Connection to pipeline:
- welded
- flanged
Tightness class:
- A according to EN 12266-1
Material type: C, H
Drive type:
- spring
- lever
- electromagnet



Check valve and inlet high-pressure preheater

+250°C
+170°C

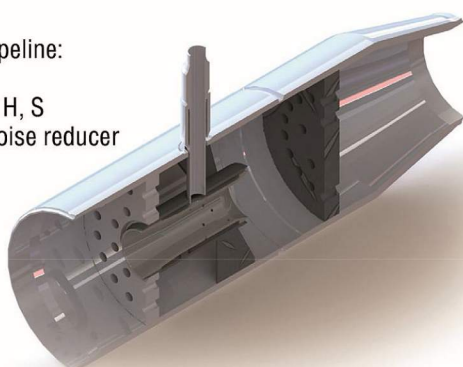
DN 200-400
PN 200-400 bar
Operating medium:
- water
Connection to pipeline:
- welded
Tightness class:
- C, D according to EN 12266-1
Material type: C, A
Drive type:
- automatic



Steam cooler

+560°C
+200°C

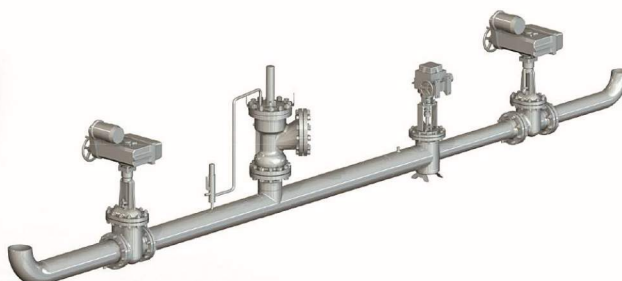
DN 50-500
PN ≤240 bar
Connection to pipeline:
- welded
Material type: A, H, S
Complete with noise reducer



Pressure-reducing and desuperheating stations

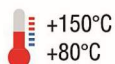
+560°C

DN 50-500
PN ≤ 450 bar
Consist of: gate valves, control valve, steam cooler with spray, Throttling device, valves for cooling water and drain lines, pulse safety device, electric actuators, pipe elements



Pipe fittings for Nuclear Power Plant

Vent valves



DN 200-1600

PN 0,006 bar

Operating medium

- nuclear air
- atmosphere air
- steam gas mixture

Installation place:

- indoors
- under the shell

Class, fitting group and welding joint subcategory:

- 2BIIIc, 3CIIIc

Connection to pipeline:

- flanged

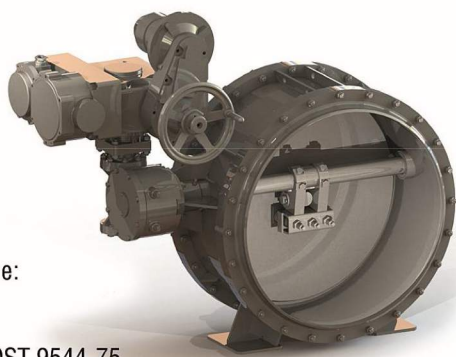
Tightness class:

- 1, 2 according to GOST 9544-75

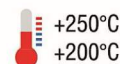
Body material: C, S

Drive type:

- manual(wheel) of the mechanical drive with worm transmission
- actuator



Rising-stem wedge gate valve



DN 50-800

Pp 16-40

Operating medium:

- steam, technical water, oil,
- 1 circuit heat transfer medium, nitrogen;
- boron solution

Connection to pipeline:

- by welding

Tightness class:

- 1, 2 according to GOST 9544

Body material: C, S

Drive type:

- wheel
- bevel or spur gear speed reducer
- actuator



Welded check valve



DN 200-800

Pp 25-140 bar

Operating medium:

- steam, technical water, oil,
- 1 circuit heat transfer medium, nitrogen;
- boron solution

Installation place:

- indoors
- under the shell

Class, fitting group and welding joint subcategory:

- 2BIIa, 2BIIIa, 3CIIIa,
- 2BIIb, 2BIIIb, 3CIIIb

Connection to pipeline:

- by welding

Tightness class:

- according to OOT-87

Body material: C, S

Drive type:

- automatic (by operating medium flow)



Welded check valve



DN50-400

PN 4,0-20,0 bar

Operating medium:

- steam, technical water, oil,
- 1 circuit heat transfer medium, nitrogen;
- boron solution

Installation place:

- indoors
- under the shell

Class, fitting group and welding joint subcategory:

- 2BIIa, 2BIIIa, 3CIIIa,

Connection to pipeline:

- by welding

Tightness class:

- according to OOT-87

Body material: C, S

Drive type:

- automatic (by operating medium flow)



Body material steel type (and identification mark)

Carbon steel	Alloy steel	Heatproof steel	Stainless steel
--------------	-------------	-----------------	-----------------